



HOW THE REQUEST-TO-PAY (RTP) WORKS?

SIMPLY EXPLAINED



For example, a consumer (Payer) shops on a merchant's (Payee) e-commerce website and chooses to pay by Credit Transfer. In a simplified view the RTP is used as follows (technical steps are not shown):

RTP INITIATION

The merchant creates the RTP from the transaction data, the identity and the payment service provider (PSP) of the consumer, the merchant's own data (including its account number) and securely sends it to the consumer through the inter-PSP network.



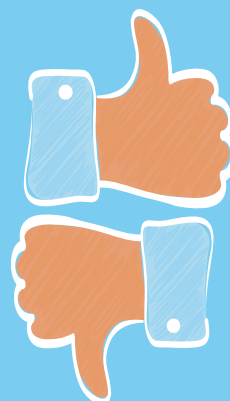
RTP PRESENTMENT

The consumer receives and checks the RTP on its device.



RTP ACCEPTATION/REFUSAL

The consumer accepts the RTP so that the payment can be initiated or refuses the RTP. In the background, a message is sent to the merchant informing about the acceptance/refusal.



PAYMENT INITIATION

In case of acceptance, the payment is initiated without the need to re-enter the amount, merchant account number, transaction reference, etc. The required consumer authentication with its PSP is performed at this stage.



RTP LIFECYCLE